



# Cost and time overruns in Major Defense Acquisition Programs (MDAPs)

David Berteau, Director  
Defense-Industrial Initiatives Group  
Center for Strategic and International Studies

May 13, 2010

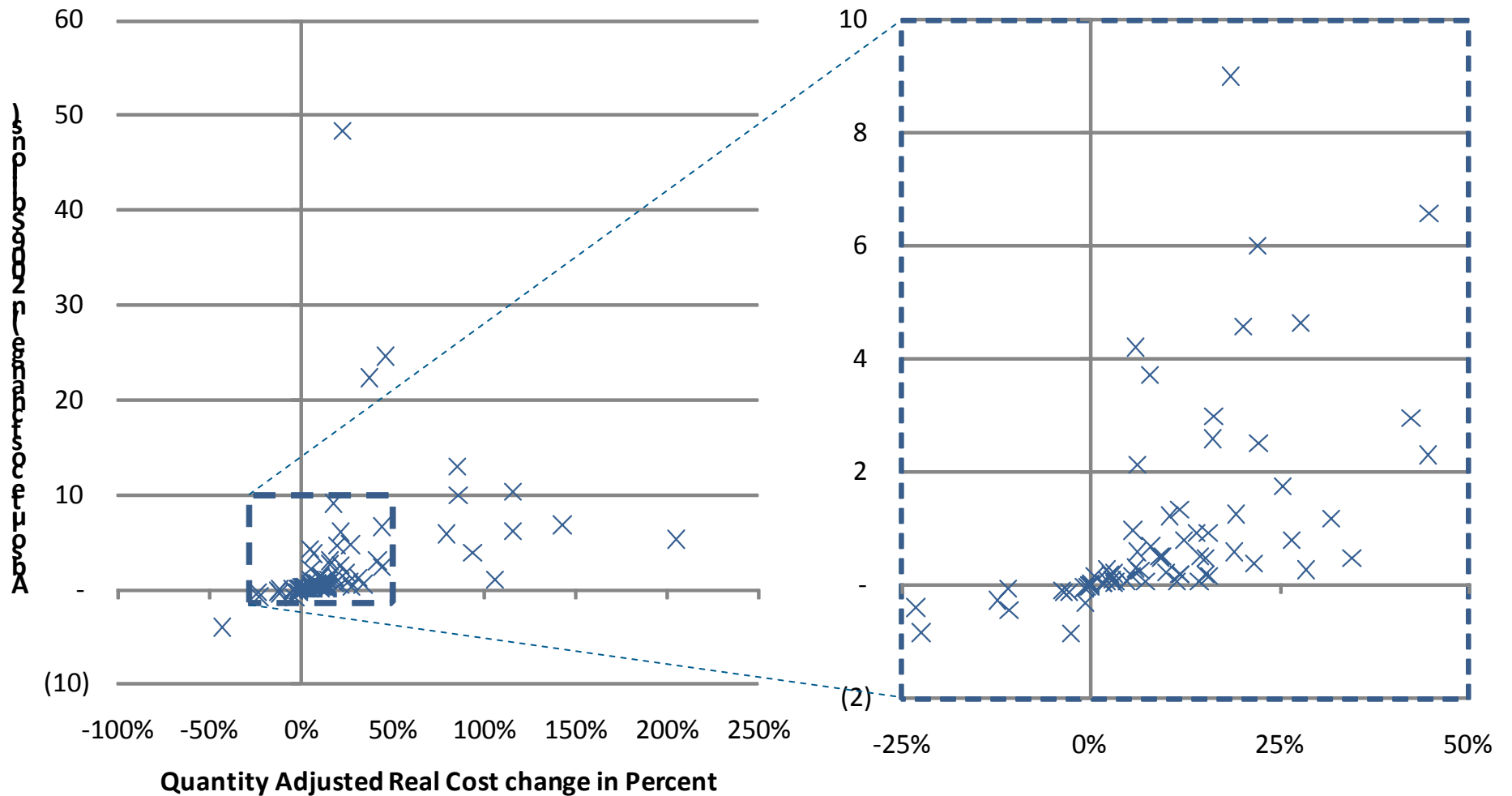
NPS 7th Annual Acquisition Research Symposium May 12-13, 2010

CSIS

CENTER FOR STRATEGIC &  
INTERNATIONAL STUDIES

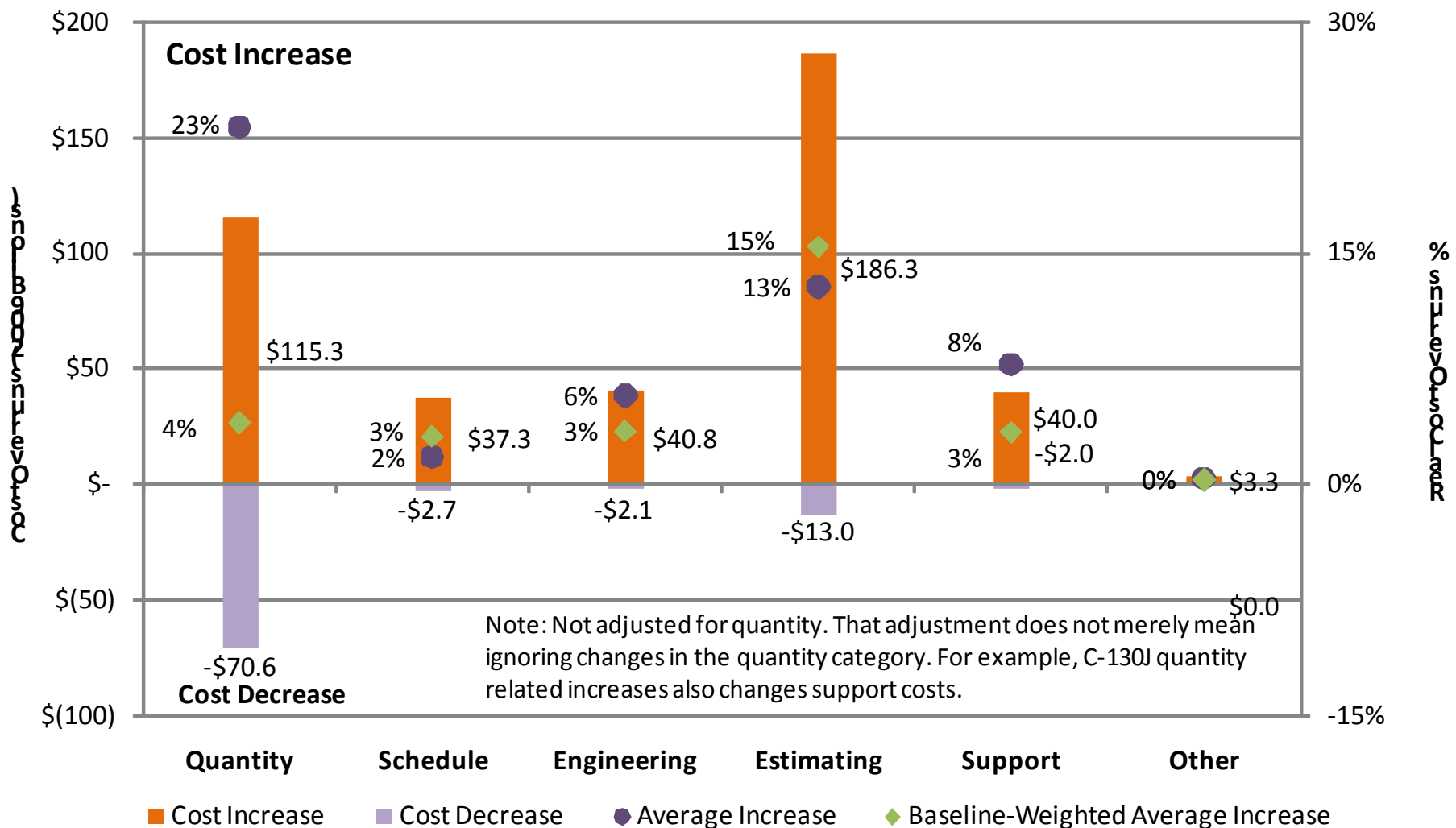
Defense-Industrial  
Initiatives Group

# Relative cost growth versus absolute cost growth



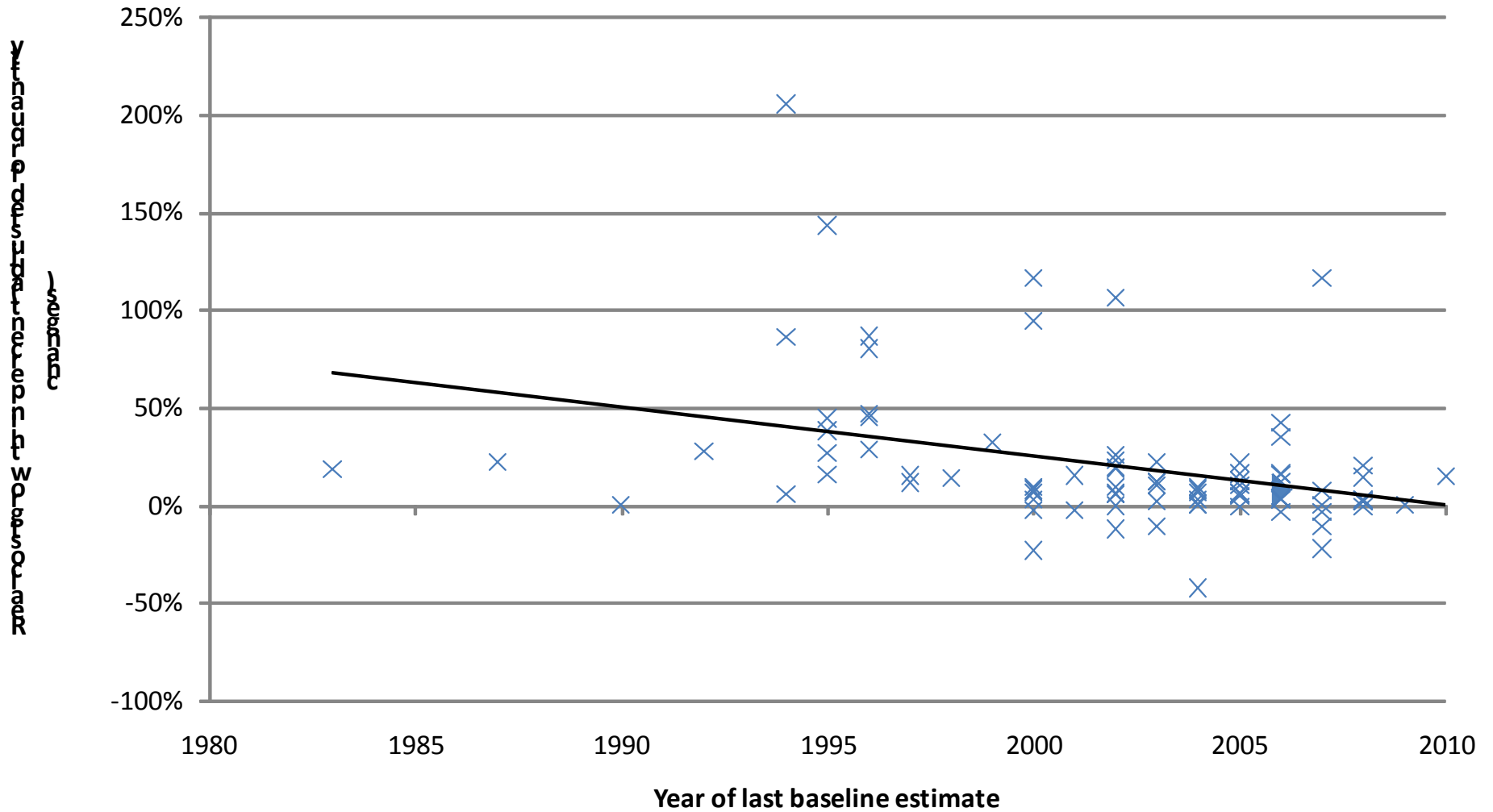
Note: Only FY2009 MDAPs with a baseline estimate beyond Milestone B in the December 2009 SAR are included in the sample.  
 Source: December 2009 SAR; analysis by CSIS Defense-Industrial Initiatives Group

# Functional reasons for cost growth



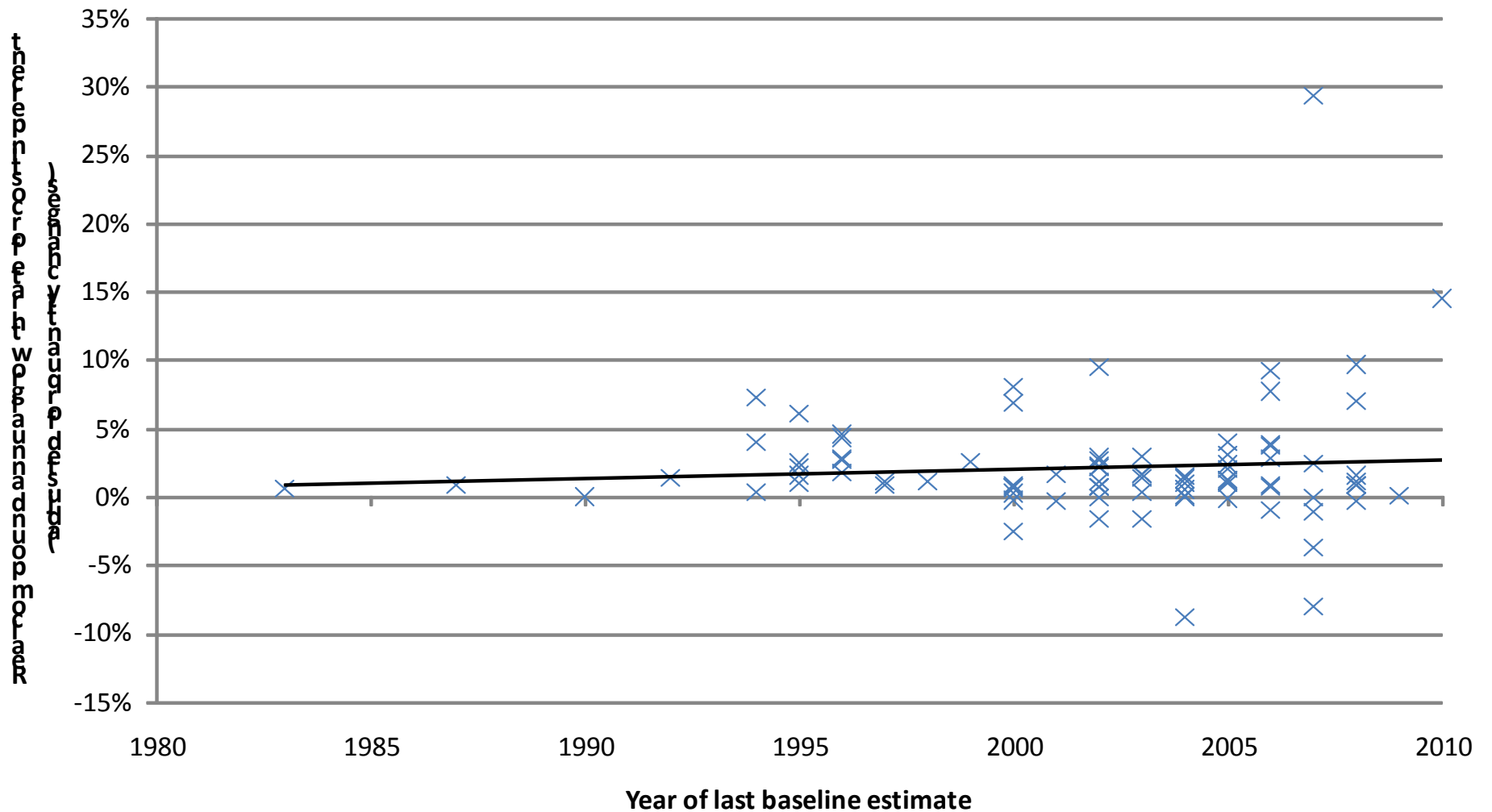
Note: Only FY2009 MDAPs with a baseline estimate beyond Milestone B in the December 2009 SAR are included in the sample.  
 Source: December 2009 SAR; analysis by CSIS Defense-Industrial Initiatives Group

# Time-cost correlation (% Change)



Note: Only FY2009 MDAPs with a baseline estimate beyond Milestone B in the December 2009 SAR are included in the sample.  
 Source: December 2009 SAR; analysis by CSIS Defense-Industrial Initiatives Group

# Time-cost correlation (Compound Annual Growth Rate)

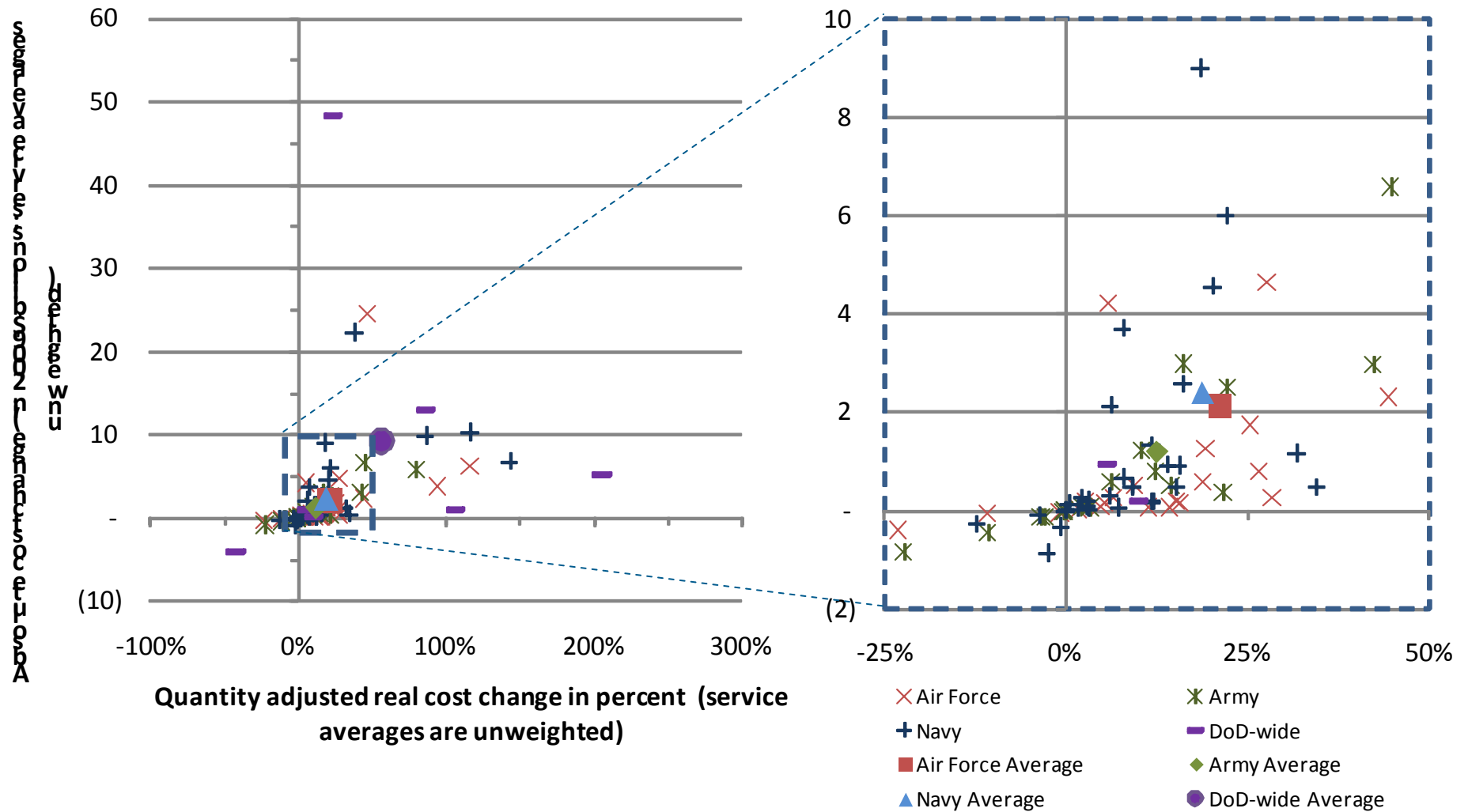


Note: Only FY2009 MDAPs with a baseline estimate beyond Milestone B in the December 2009 SAR are included in the sample.

WIN-T Increment 2 was changed baseline years in 2010, but the compound annual growth rate was calculated as if the change happened in 2009.

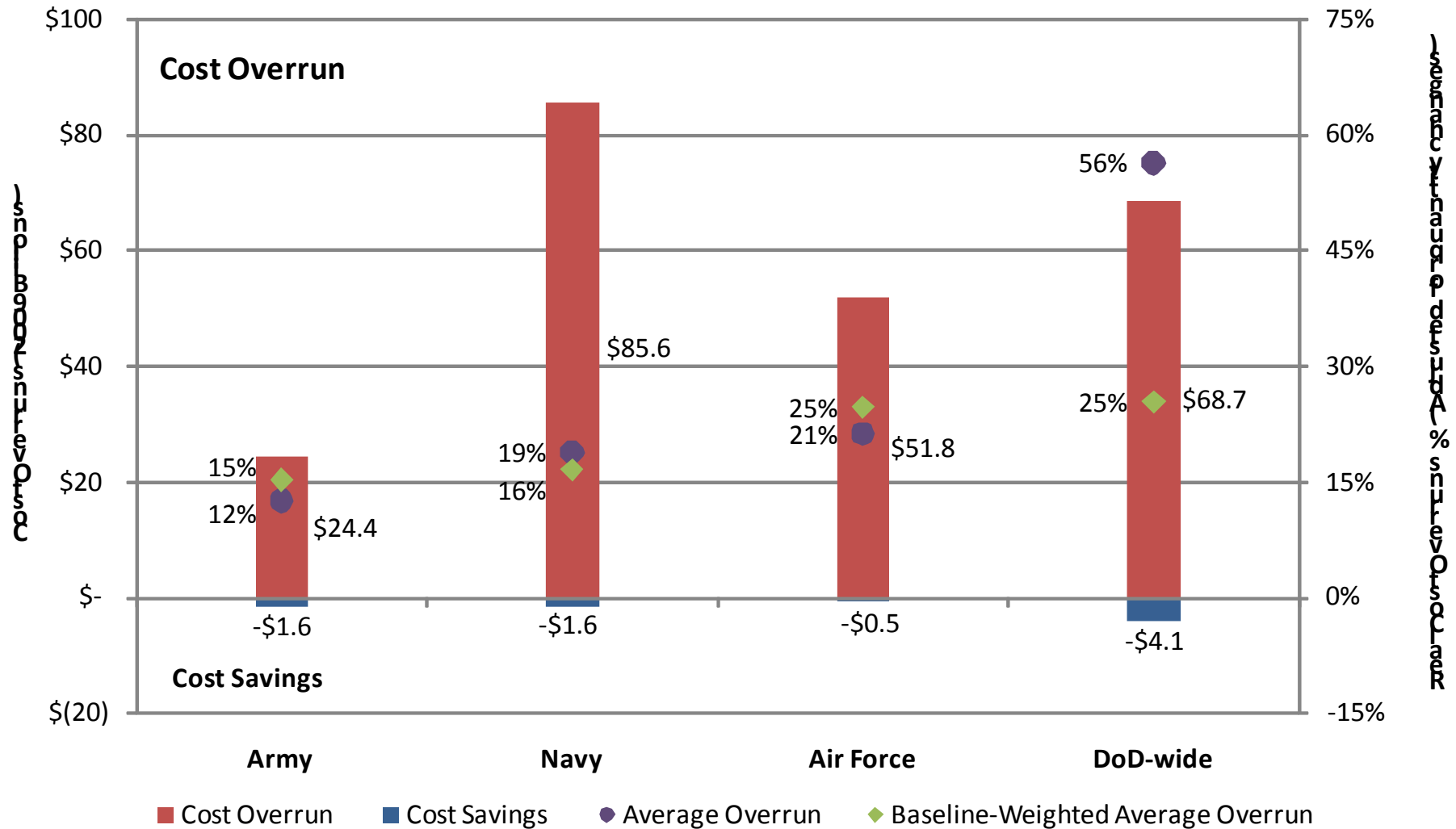
Source: December 2009 SAR; analysis by CSIS Defense-Industrial Initiatives Group

# Cost overruns by lead service (I)



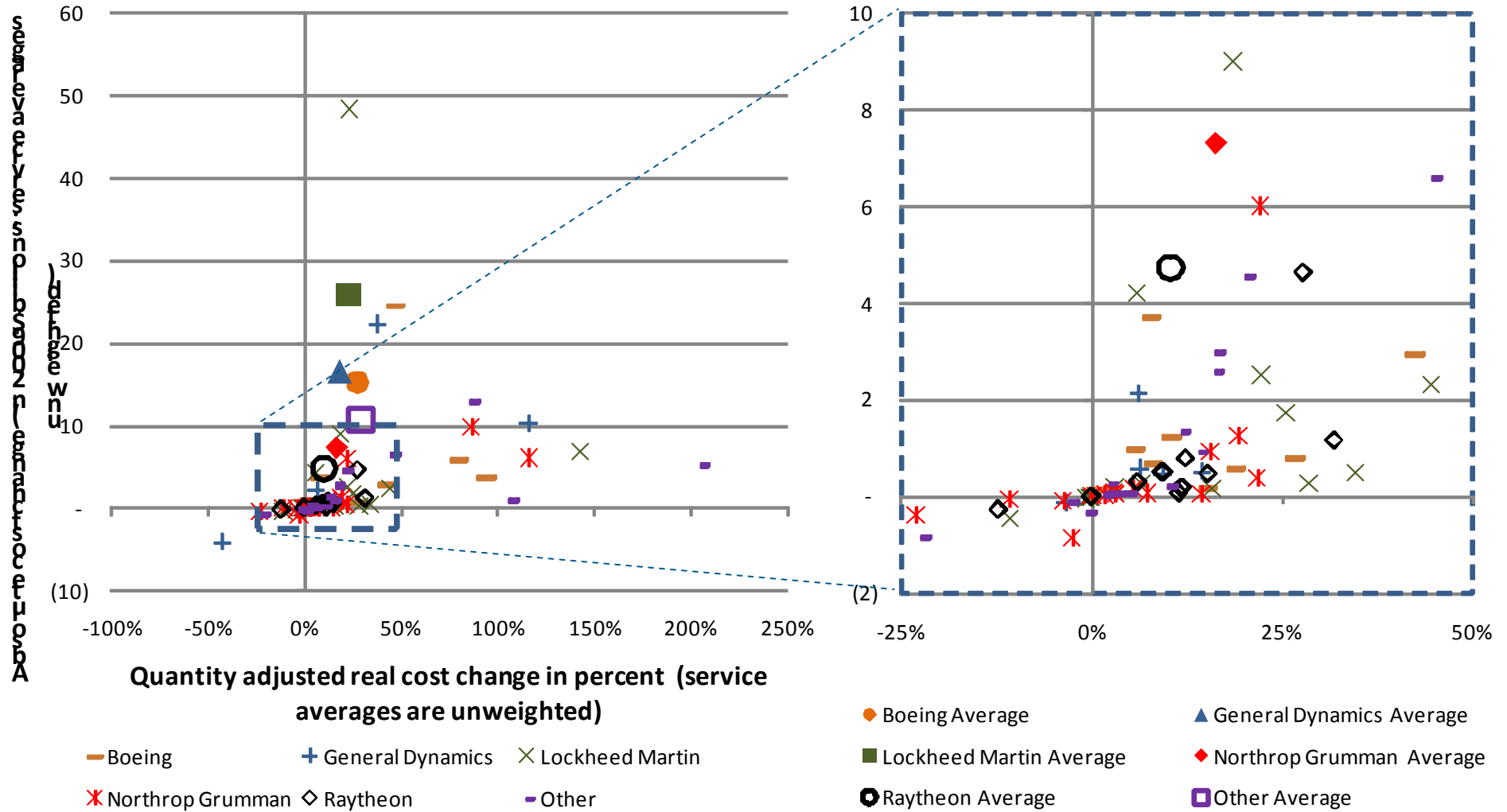
Note: Only FY2009 MDAPs with a baseline estimate beyond Milestone B in the December 2009 SAR are included in the sample.  
 Source: December 2009 SAR; analysis by CSIS Defense-Industrial Initiatives Group

## Cost overruns by lead service (II)



Note: Only FY2009 MDAPs with a baseline estimate beyond Milestone B in the December 2009 SAR are included in the sample.  
 Source: December 2009 SAR; analysis by CSIS Defense-Industrial Initiatives Group

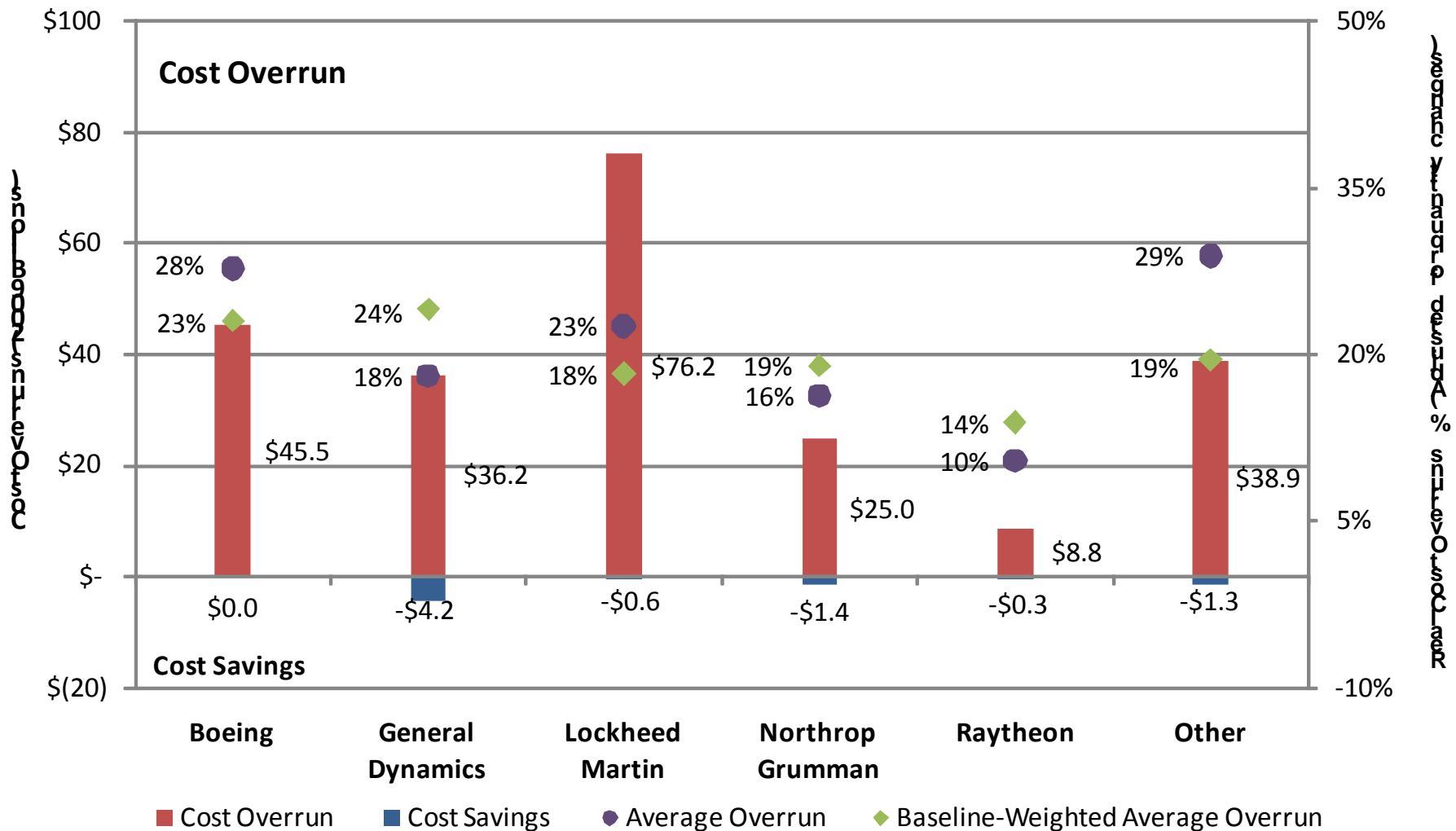
# Cost overruns by prime contractor (I)



Note: Only FY2009 MDAPs with a baseline estimate beyond Milestone B in the December 2009 SAR are included in the sample.  
 Source: December 2009 SAR; analysis by CSIS Defense-Industrial Initiatives Group

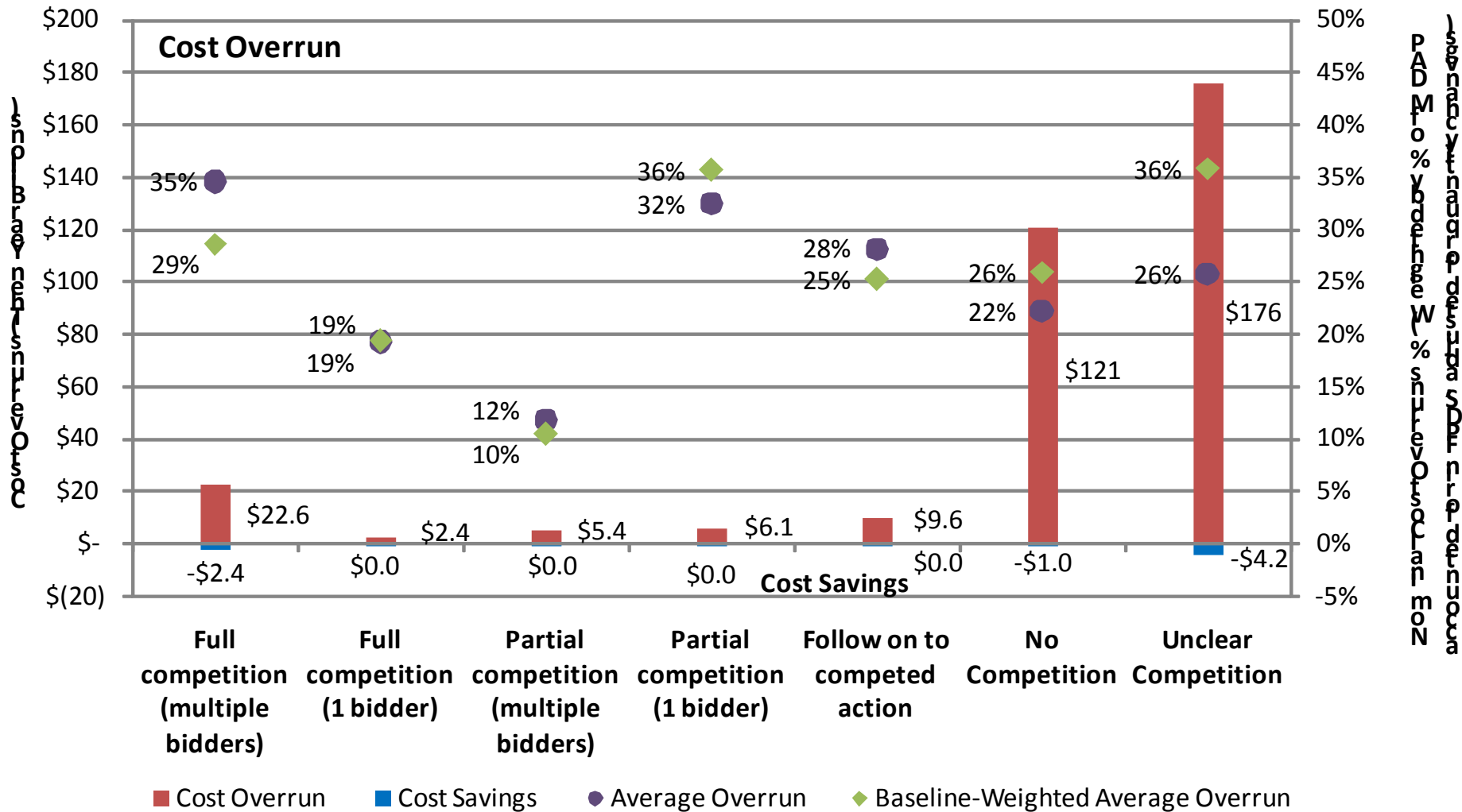


## Cost overruns by prime contractor (II)



Note: Only FY2009 MDAPs with a baseline estimate beyond Milestone B in the December 2009 SAR are included in the sample.  
 Source: December 2009 SAR; analysis by CSIS Defense-Industrial Initiatives Group

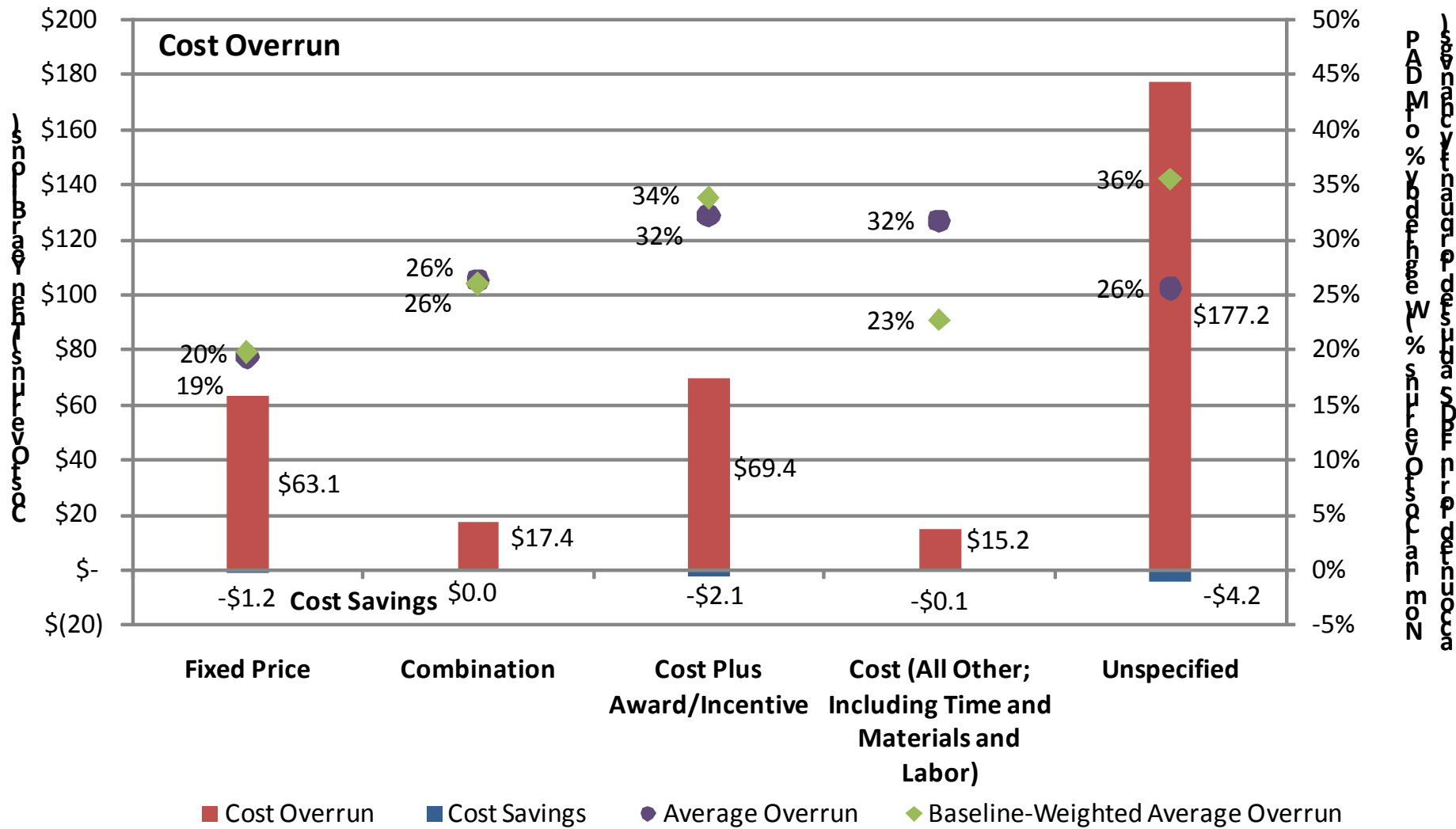
# Cost overruns by type of competition



Note: Only FY2009 MDAPs with a baseline estimate beyond Milestone B in the December 2009 SAR are included in the sample.

Source: December 2009, September 2008, September 2006, and September 2004 SARs; 2004-2008 FPDS data; analysis by CSIS Defense-Industrial Initiatives Group

# Cost overruns by contract type



Note: Only FY2009 MDAPs with a baseline estimate beyond Milestone B in the December 2009 SAR are included in the sample.  
 Source: December 2009, September 2008, September 2006, and September 2004 SARs; 2004-2008 FPDS data; analysis by CSIS Defense-Industrial Initiatives Group

---

## About CSIS

At a time of new global opportunities and challenges, the Center for Strategic and International Studies (CSIS) provides strategic insights and policy solutions to decisionmakers in government, international institutions, the private sector, and civil society. A bipartisan, nonprofit organization headquartered in Washington, DC, CSIS conducts research and analysis and develops policy initiatives that look into the future and anticipate change.

Founded by David M. Abshire and Admiral Arleigh Burke at the height of the Cold War, CSIS was dedicated to finding ways for America to sustain its prominence and prosperity as a force for good in the world.

Since 1962, CSIS has grown to become one of the world's preeminent international policy institutions, with more than 220 full-time staff and a large network of affiliated scholars focused on defense and security, regional stability, and transnational challenges ranging from energy and climate to global development and economic integration.

Former U.S. senator Sam Nunn became chairman of the CSIS Board of Trustees in 1999, and John J. Hamre has led CSIS as its president and chief executive officer since April 2000

*CSIS does not take specific policy positions; accordingly, all views expressed in this presentation should be understood to be solely those of the author(s).*